



MINISTRY OF INTERNATIONAL TRADE AND INDUSTRY

# Weekly BULLETIN

## VOLUME 667

7 December 2021 | NO. ISSN :2180-0448

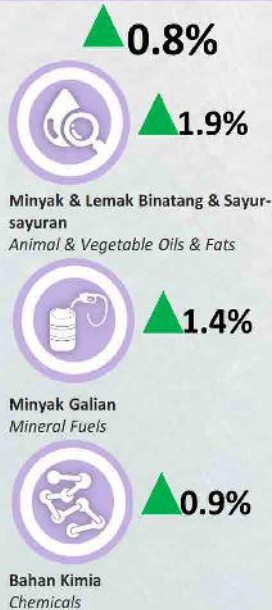
### EXTERNAL TRADE INDICES, OCTOBER 2021

Indeks nilai seunit eksport & import masing-masing meningkat 1.4% dan 0.6 %  
The export & import unit value indices grew 1.4% and 0.6%, respectively

**NILAI (RM BILION)**  
Value (RM Billion)

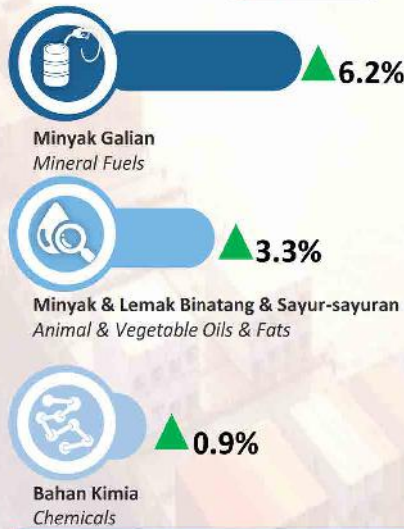


**TERMA PERDAGANGAN**  
Terms of Trade

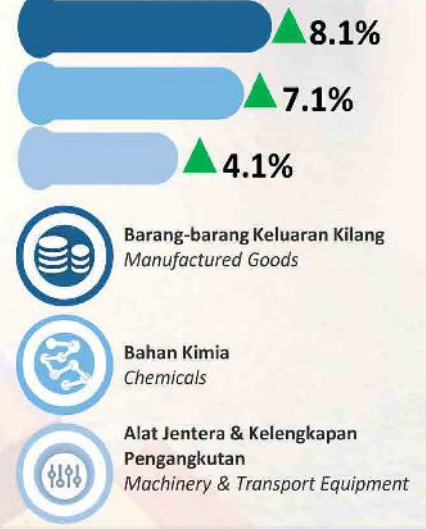


**EKSPORT**  
Exports

**Indeks Nilai Seunit**  
Unit Value Index

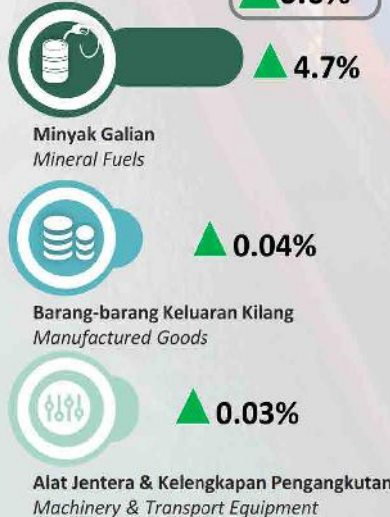


**Indeks Volum**  
Volume Index

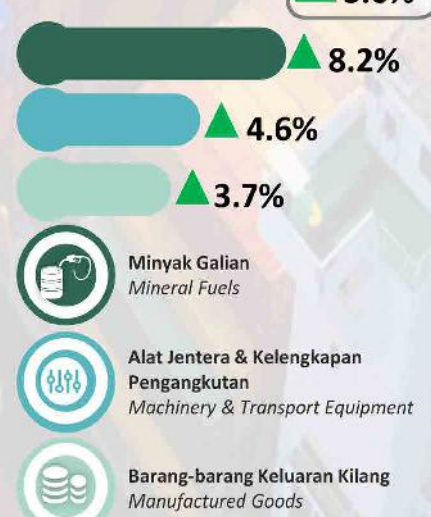


**IMPORT**  
Imports

**Indeks Nilai Seunit**  
Unit Value Index



**Indeks Volum**  
Volume Index



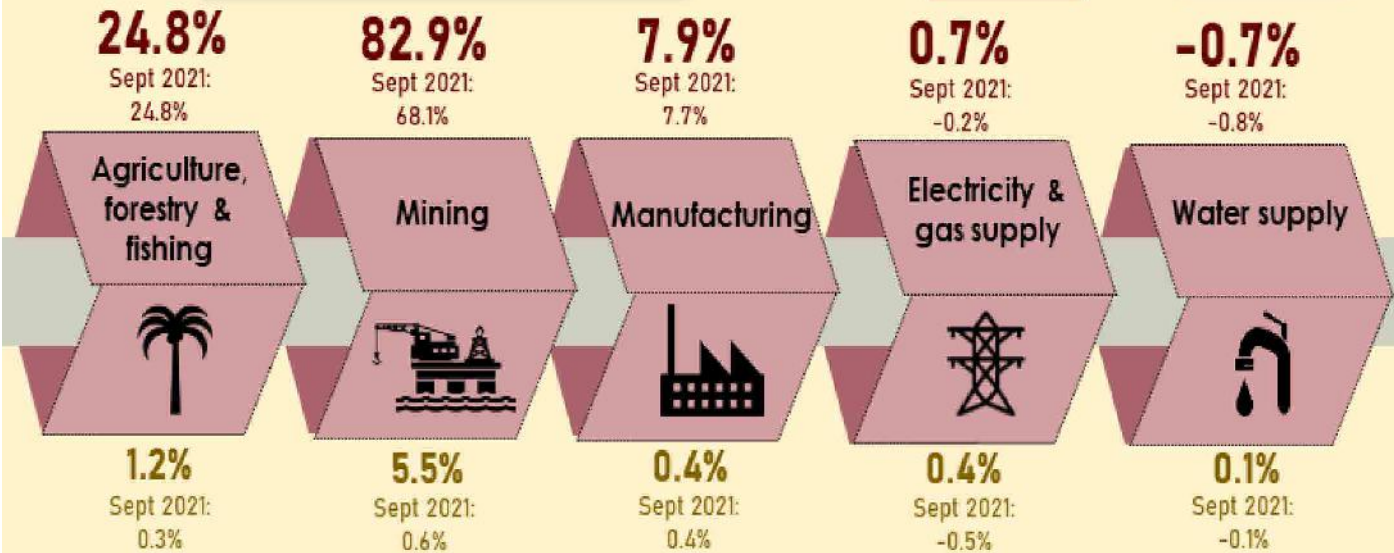
Semua perubahan berdasarkan perbandingan bulan ke bulan.  
All changes are based on month-on-month comparison

Indeks Perdagangan Luar Negeri, Oktober 2021  
External Trade Indices, October 2021

# PRODUCE PRICE INDEX, OCTOBER 2021

## PPI LOCAL PRODUCTION, OCTOBER 2021

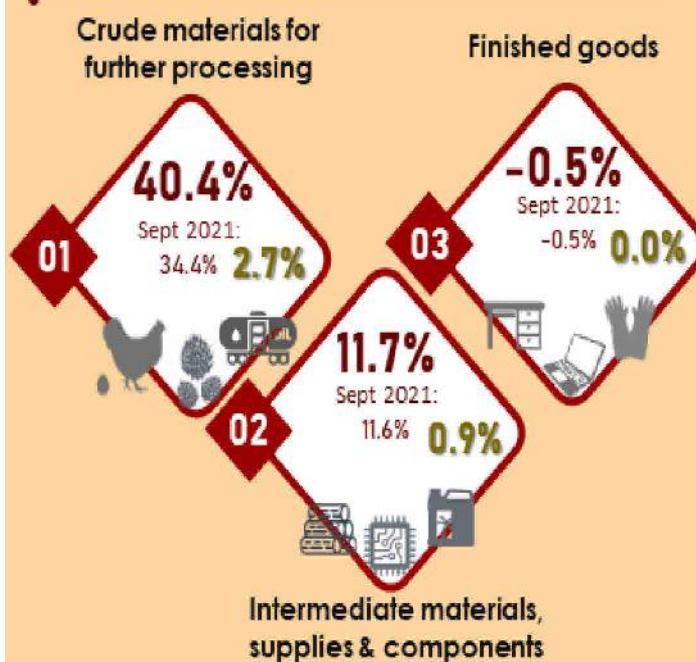
### PPI BY SECTOR



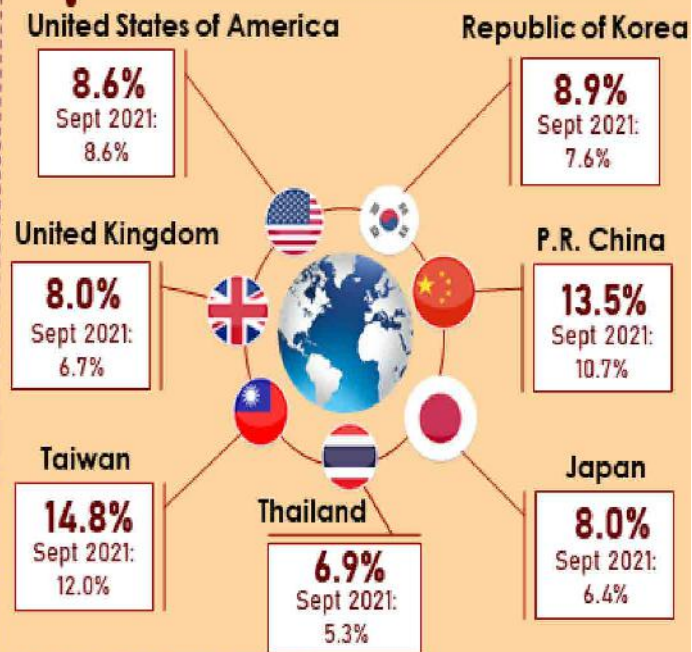
**13.2%**  
Sept 2021: 12.3%  
year-on-year

**1.0%**  
Sept 2021: 0.4%  
month-on-month

### PPI BY STAGE OF PROCESSING



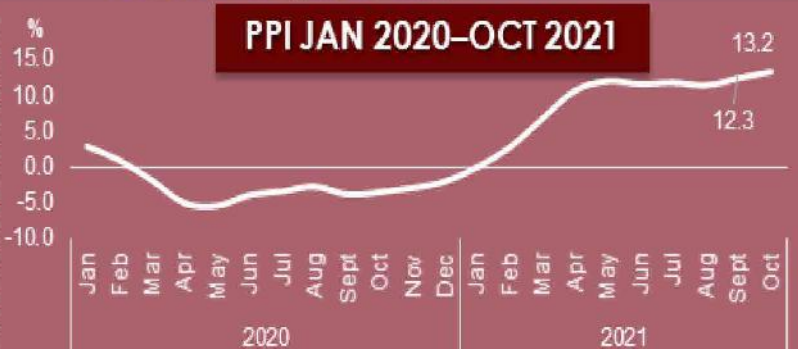
### PPI OF SELECTED COUNTRIES



Source: tradingeconomics.com



PPI 2011-2020

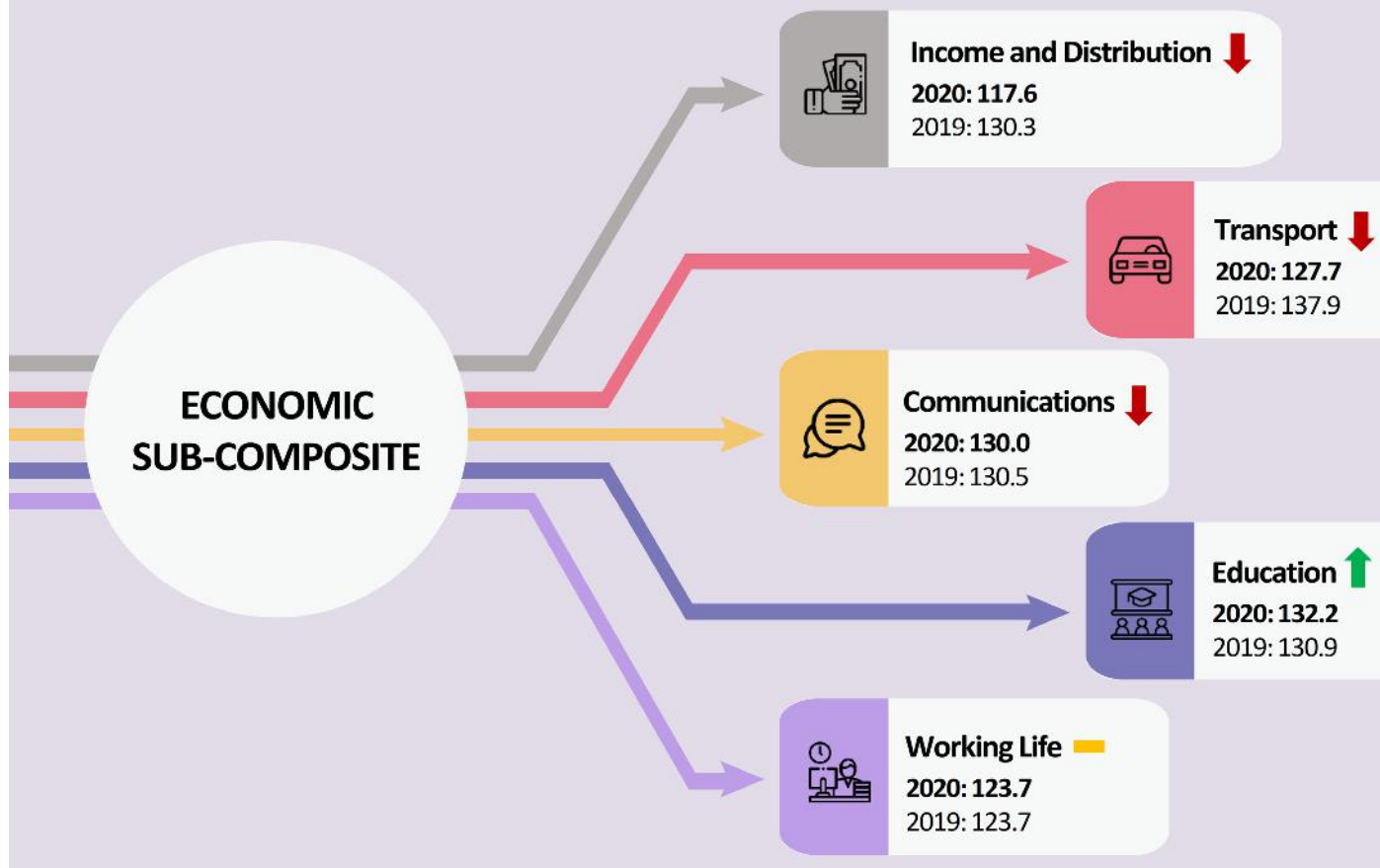
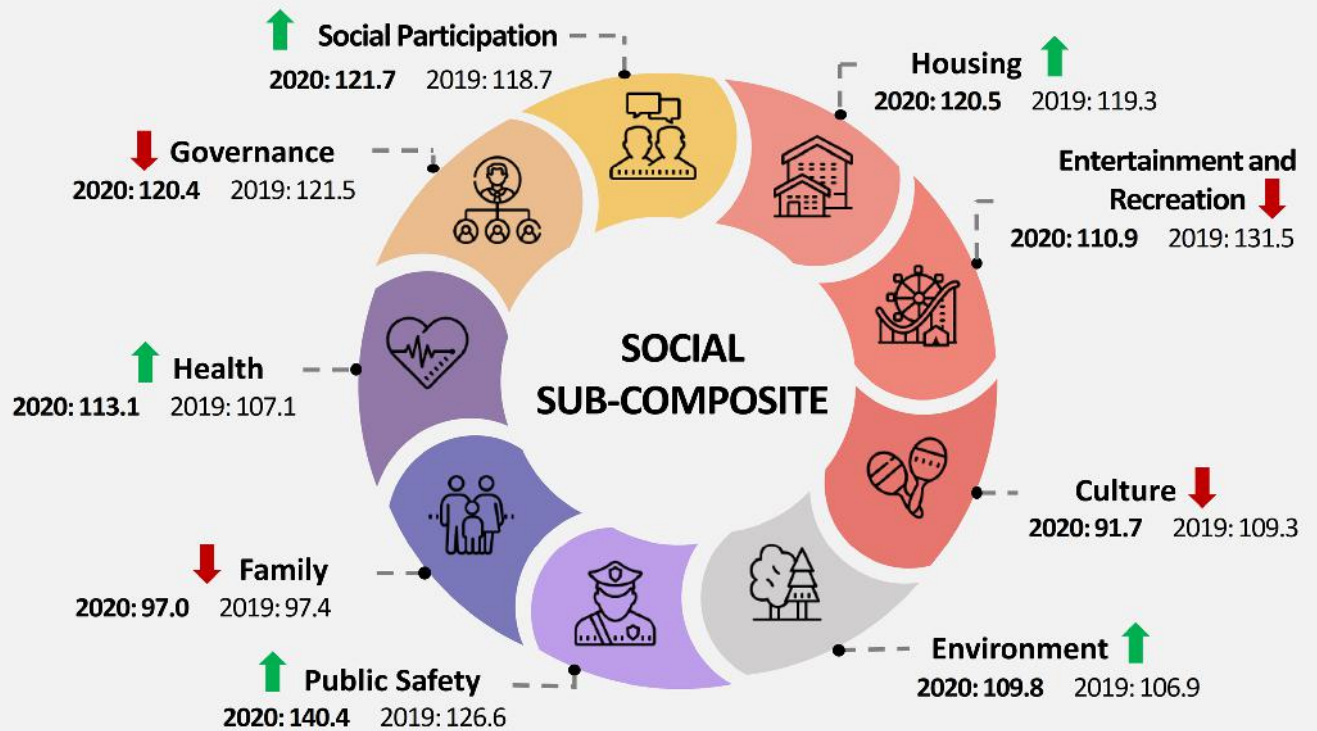


PPI JAN 2020-OCT 2021

Source: Producer Price Index (2010=100) Local Production, Department of Statistics Malaysia

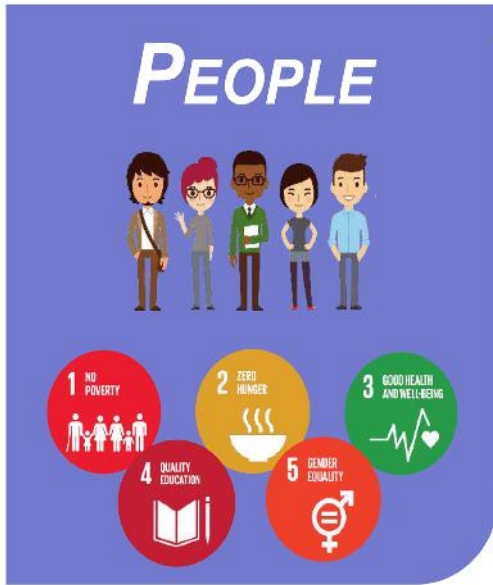
## MALAYSIA WELL-BEING INDEX, 2020

# Malaysian Well-being Index (MyWI) 2020



Source: Department of Statistics, Malaysia (DOSM)

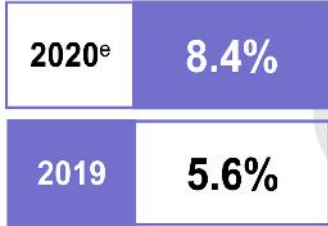
# SDG INDICATORS MALAYSIA, 2020



## GOAL 1: NO POVERTY

SDG 1.2.1

Incidence of absolute poverty<sup>1</sup> **increased**



Notes:  
i) Incidence of absolute poverty has been affected by MCO  
ii) <sup>e</sup> Estimates

SDG 3.6.1

## GOAL 3: GOOD HEALTH AND WELLBEING

Death rate due to road traffic injuries<sup>3</sup> **declined**



Notes:  
i) <sup>r</sup> Revised  
ii) The rates are per 100,000 population

SDG 4.c.1

## GOAL 4: QUALITY EDUCATION

Proportion of teachers with minimum organised teacher training in pre-primary and secondary level of education **increased**, while in primary level slightly **decreased**<sup>4</sup>

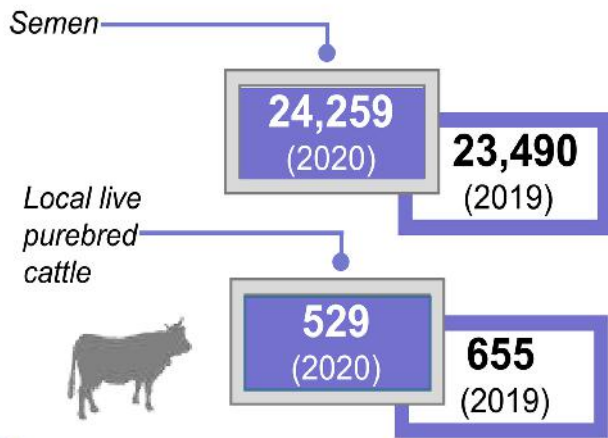


Note:  
<sup>r</sup> Revised

SDG 2.5.1

## GOAL 2: ZERO HUNGER

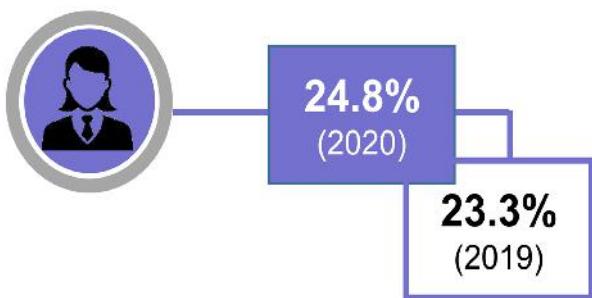
Number of animal genetic resources for food and agriculture secured in either medium or long-term conservation facilities<sup>2</sup>



SDG 5.5.2

## GOAL 5: GENDER EQUALITY

Proportion of women in managerial positions<sup>1</sup> **improved**



## SUMBER

<sup>1</sup> Department of Statistics Malaysia  
<sup>2</sup> Department of Veterinary Services  
<sup>3</sup> Royal Malaysia Police  
<sup>4</sup> Ministry of Education Malaysia

# SDG INDICATORS MALAYSIA, 2020



## GOAL 6: CLEAN WATER AND SANITATION

SDG 6.1.1

Proportion of population using safely managed drinking water services<sup>1</sup> **improved**

95.7%  
(2019)

95.6%  
(2018)



SDG 13.1.1

## GOAL 13: CLIMATE ACTION

Number of deaths attributed to disasters<sup>3</sup> per 100,000 population **increased**



16  
persons  
(2020)

9  
persons  
(2019)

SDG 15.7.1

## GOAL 15: LIFE ON LAND

Number of wildlife crime cases by possession/ own use category<sup>5</sup> **increased by 19 cases**

1,060  
cases  
(2020)

1,041  
cases  
(2019)



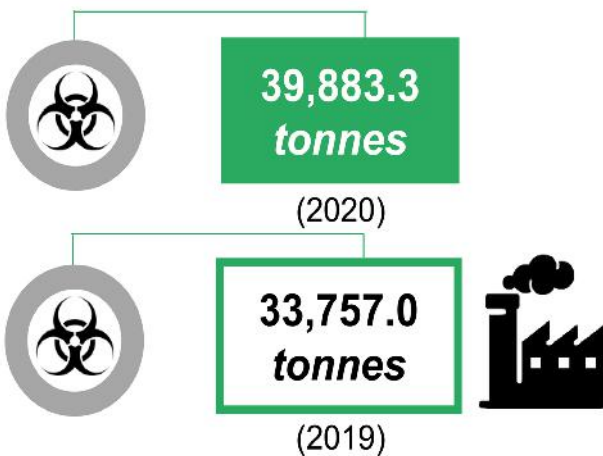
## SOURCES

- <sup>1</sup> Ministry of Environment and Water and National Water Services Commission
- <sup>2</sup> Department of Environment
- <sup>3</sup> National Disaster Management Agency
- <sup>4</sup> Department of Fisheries
- <sup>5</sup> Department of Wildlife and National Parks (DWNP) Peninsular Malaysia

SDG 12.4.2

## GOAL 12: RESPONSIBLE CONSUMPTION AND PRODUCTION

Quantity of clinical waste handled for destruction at incinerators<sup>2</sup> **escalated**

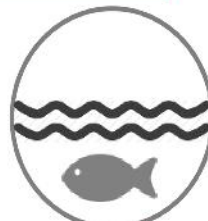
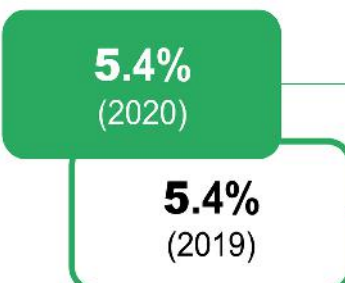


Note:  
Number of clinical waste has been affected by MCO

SDG 14.5.1

## GOAL 14: LIFE BELOW WATER

5.4% coverage of protected areas in relation to marine areas<sup>4</sup> in 2019 and 2020



# SDG INDICATORS MALAYSIA, 2020

## PROSPERITY



### GOAL 7: AFFORDABLE AND CLEAN ENERGY

SDG 7.1.1





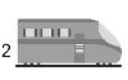


99.9% population with access to electricity<sup>1</sup> in 2016 and 2019



### GOAL 9: INDUSTRY, INNOVATION AND INFRASTRUCTURE

SDG 9.1.2

Number of passengers by type of services ('000) **decreased**



	2020	2019
Airport <sup>3</sup> 	26.8 million	109.4 million
Rail Services <sup>2</sup> 	1.0 million	3.7 million
KTM Commuter <sup>2</sup> 	11.8 million	30.4 million
ETS <sup>2</sup> 	1.6 million	3.9 million
Rail Transport Services <sup>3</sup> 	122.9 million	245.2 million

Notes:  
 i) Number of passengers has been affected by MCO  
 ii) Rail Transport Services refers to LRT, MRT, KL Monorel, KLIA Ekspres and KLIA Transit

SDG 8.5.2

### GOAL 8: DECENT WORK AND ECONOMIC GROWTH

Unemployment rate<sup>1</sup> by sex **increased**

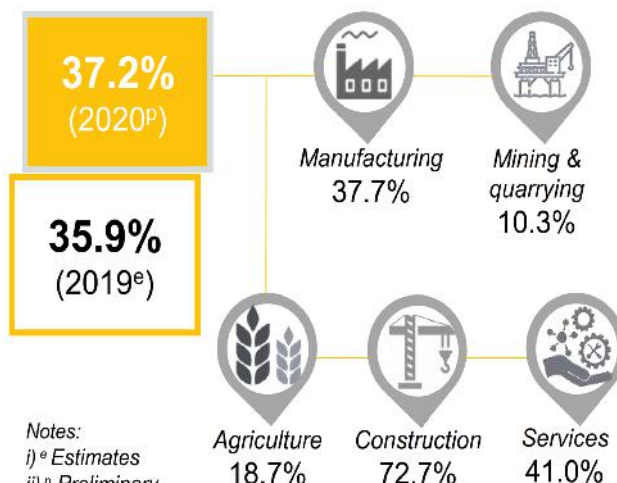
 Male	(2020)	4.4%
	(2019)	3.2%
 Female	(2020)	4.7%
	(2019)	3.4%

Note:  
Unemployment rate has been affected by MCO

SDG 10.4.1

### GOAL 10: REDUCE INEQUALITIES

Compensation of employees<sup>1</sup> **increased**



Notes:  
 i) <sup>e</sup> Estimates  
 ii) <sup>p</sup> Preliminary

SDG 11.6.2

### GOAL 11: SUSTAINABLE CITIES AND COMMUNITIES

Annual mean levels of fine particulate matter in cities<sup>4</sup> for PM<sub>2.5</sub> **improved**



### SOURCES

<sup>1</sup> Department of Statistics Malaysia  
<sup>2</sup> Malayan Railways Limited  
<sup>3</sup> Ministry of Transport Malaysia  
<sup>4</sup> Department of Environment

## SDG INDICATORS MALAYSIA, 2020

## PEACE

16  
PEACE, JUSTICE  
AND STRONG  
INSTITUTIONSSDG  
16.1.1GOAL 16: PEACE, JUSTICE AND  
STRONG INSTITUTIONSNumber of reported violent crime<sup>1</sup> decreased

Murder

253  
(2020)310  
(2019)

Injury

4,118  
(2020)4,712  
(2019)

## PARTNERSHIP

17  
PARTNERSHIPS  
FOR THE GOALSSDG  
17.8.1

## GOAL 17: PARTNERSHIP FOR THE GOALS

Proportion of individuals using the Internet<sup>2</sup>  
inclined89.6%  
(2020)84.2%  
(2019)

Urban



92.4% (2020)

87.5% (2019)

Rural



79.4% (2020)

72.7% (2019)

Note:

Proportion of individuals using the Internet has been  
affected by MCO

## SOURCES

<sup>1</sup> Royal Malaysia Police<sup>2</sup> Department of Statistics Malaysia

## SDG INDICATORS MALAYSIA, 2020


**Goal 1:**  
**No Poverty**
**SDG 1.2.1** Proportion of population living below the national poverty line

**Absolute Poverty**  
**2020<sup>e</sup>: 8.4%**  
 2019: 5.6%

 Note:  
<sup>e</sup> Estimates

 Source:  
 Household Income Estimates and  
 Incidence of Poverty, 2020  
 Department of Statistics Malaysia

**Goal 4:**  
**Quality Education**
**SDG 4.1.1** Proportion of children and young people achieving at least a minimum proficiency level in (i) reading and (ii) mathematics

 COVID-19 has **affect the measurement of SDG 4.1.1** due to the abolishment of Ujian Pencapaian Sekolah Rendah (UPSR) and cancellation of Form Three Assessment (PT3) in 2021

 Source:  
 Ministry of Education Malaysia

**Goal 9:**  
**Industry, Innovation and Infrastructure**
**SDG 9.1.2** Passenger and freight volumes

**Number of passengers handled by airport**  
**2020: 26.8 million**  
 2019: 109.4 million

 Source:  
 Ministry of Transport Malaysia

**Goal 16:**  
**Peace, Justice and Strong Institutions**
**SDG 16.3.2** Unsentenced detainees as a proportion of overall prison population

**Unsentenced detainees**  
**2020: 40.5%**  
 2019: 27.5%

 Source:  
 Malaysian Prison Department

**Goal 3:**  
**Good Health and Well-Being**
**SDG 3.b.1** Proportion of the target population covered by all vaccines included in their national programme

**Total Population Vaccinated (COVID-19 Vaccination)<sup>a</sup>**  
**Fully Vaccinated: 75.2%**  
**At Least 1 Dose: 78.1%**  
 Unvaccinated: 27.1%

 Note:  
<sup>a</sup> COVIDNOW in Malaysia,  
 Data as of 2<sup>nd</sup> Nov 2021, 11:59 pm

 Source:  
 Ministry of Health Malaysia

**Goal 8:**  
**Decent Work and Economic Growth**
**SDG 8.5.2** Unemployment rate

**Unemployment rate**  
**2020: 4.5%**  
 2019: 3.3%

 Source:  
 Labour Force Survey, 2020  
 Department of Statistics Malaysia

**Goal 12:**  
**Responsible Consumption and Production**
**SDG 12.4.2** Quantity of clinical wastes handled for destruction at incinerators (proxy)

**Quantity of clinical wastes handled for destruction at incinerators**  
**2020: 39,883.3 tonnes**  
 2019: 33,757.0 tonnes

 Source:  
 Department of Environment

**Goal 17:**  
**Partnerships for the Goals**
**SDG 17.8.1** Proportion of individuals using the Internet

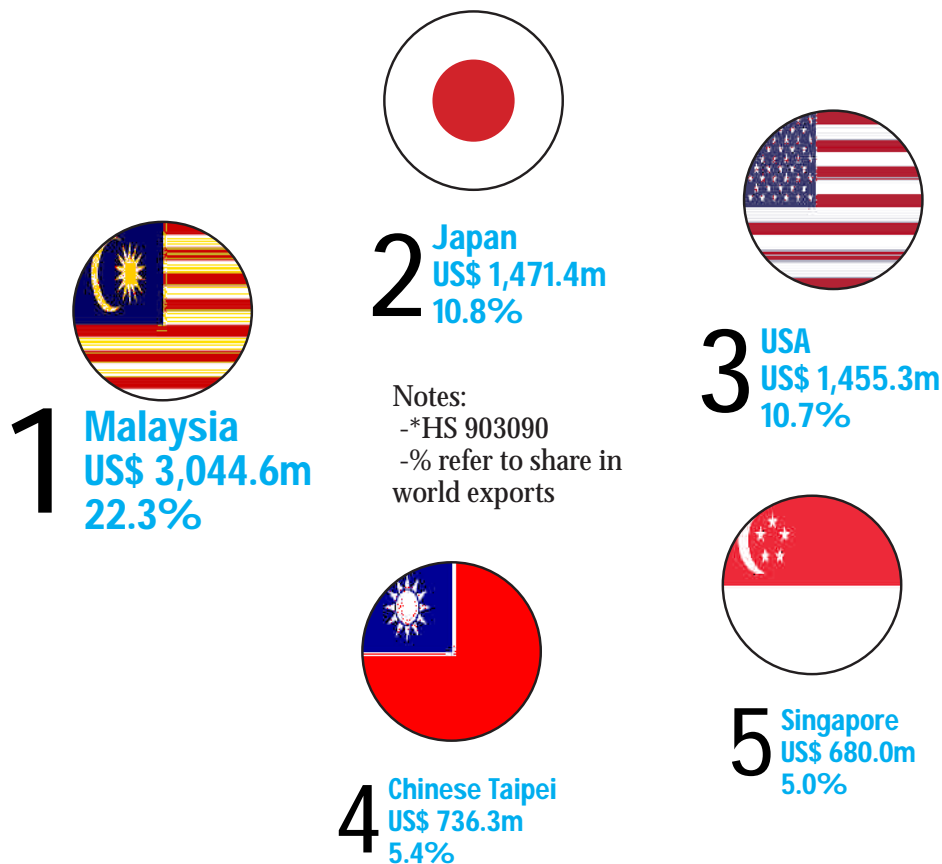
**Individuals using the Internet**  
**2020: 89.6%**  
 2019: 84.2%

 Source:  
 ICT Use and Access by Individuals and Households Survey, 2020  
 Department of Statistics Malaysia

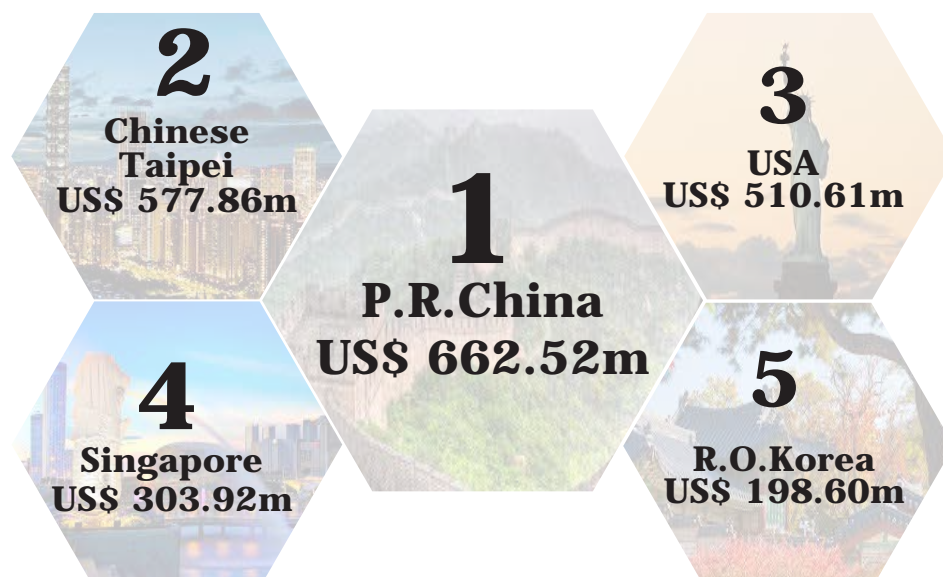


## WORLD LARGEST EXPORTERS OF PARTS AND ACCESSORIES FOR INSTRUMENTS AND APPARATUS FOR MEASURING OR CHECKING ELECTRICAL QUANTITIES OR FOR DETECTING IONISING RADIATIONS, N.E.S.

In 2020, Malaysia's export of World largest exporter of Parts and accessories for instruments and apparatus for measuring or checking electrical quantities or for detecting ionising radiations, n.e.s. recorded US\$ 3,044.6 million which was 22.3% share of the world exports.



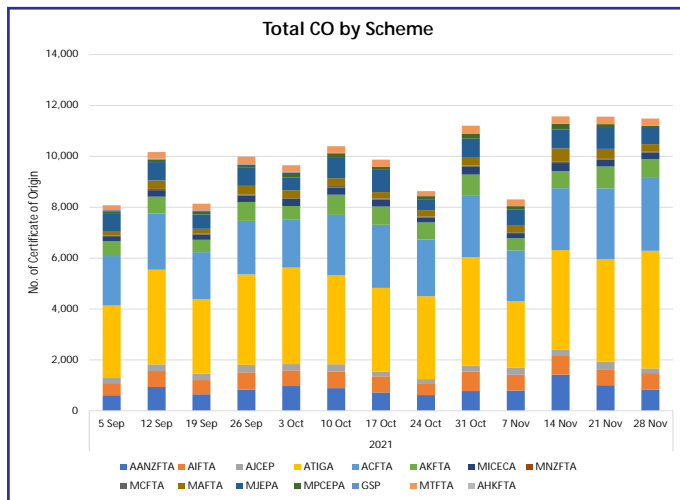
## MALAYSIA'S TOP EXPORT DESTINATIONS



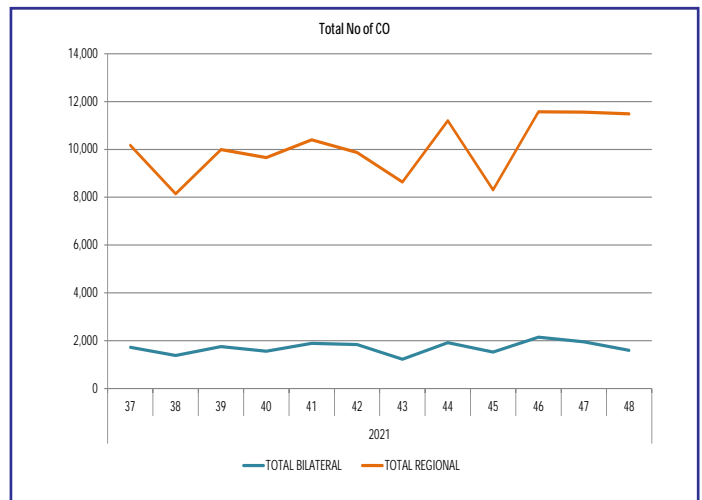
Source: <https://www.trademap.org/index.aspx>

# Number and FOB Value of PCO as at 28 November 2021 Weekly / Monthly/ Annually

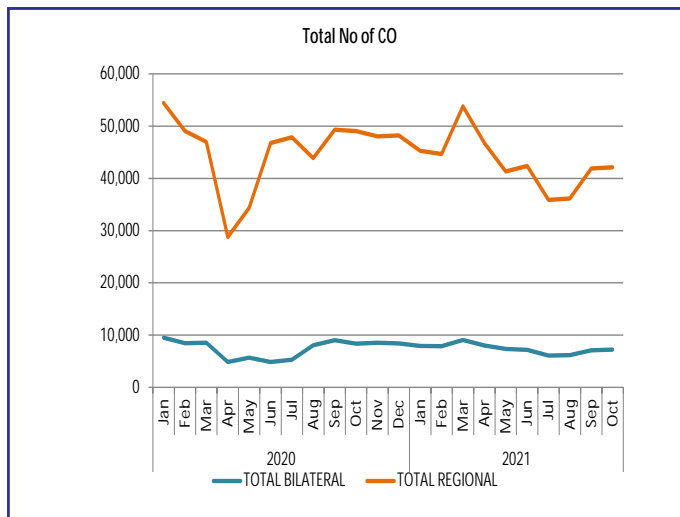
## Weekly Total Scheme



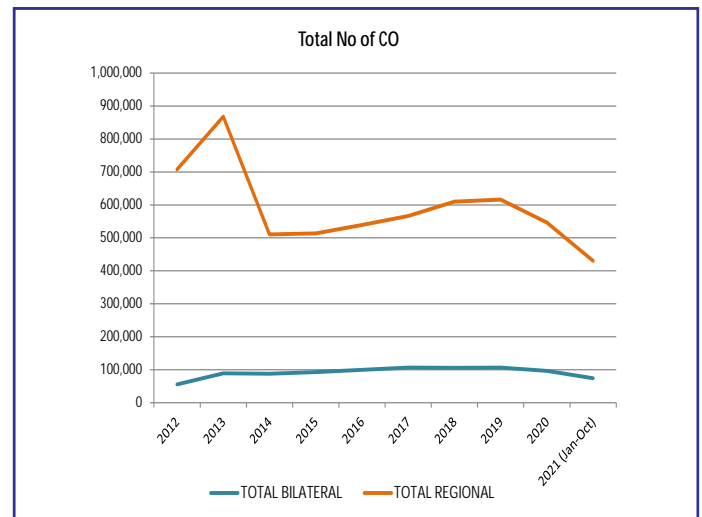
## Weekly



## Monthly



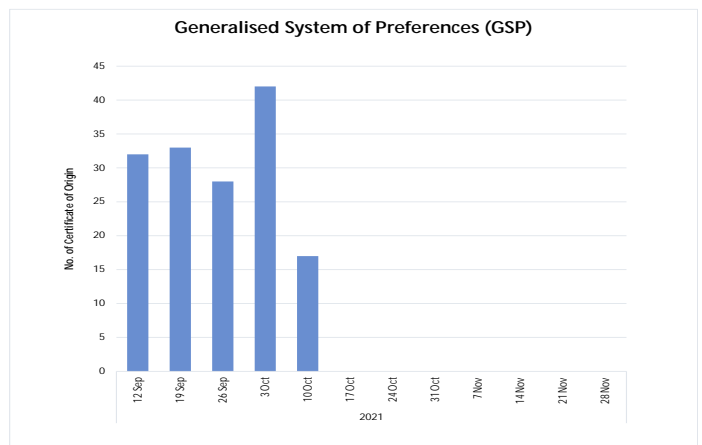
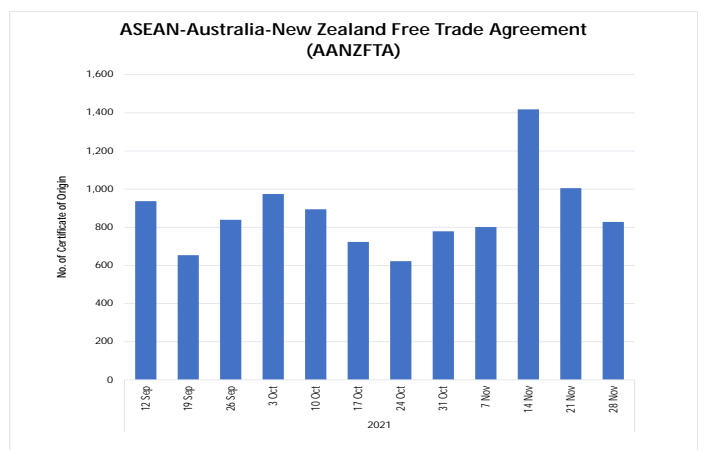
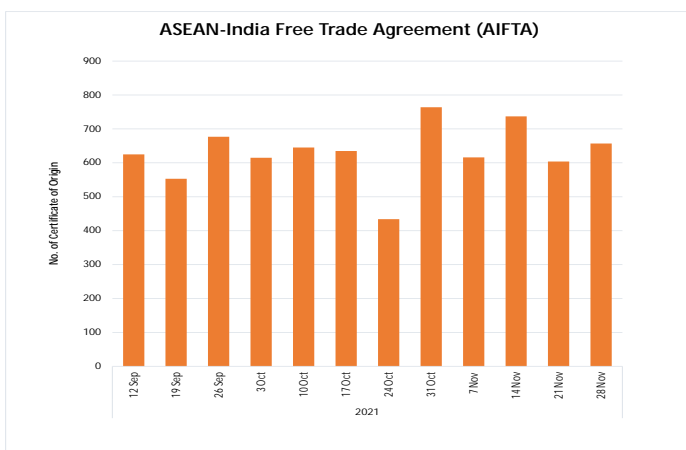
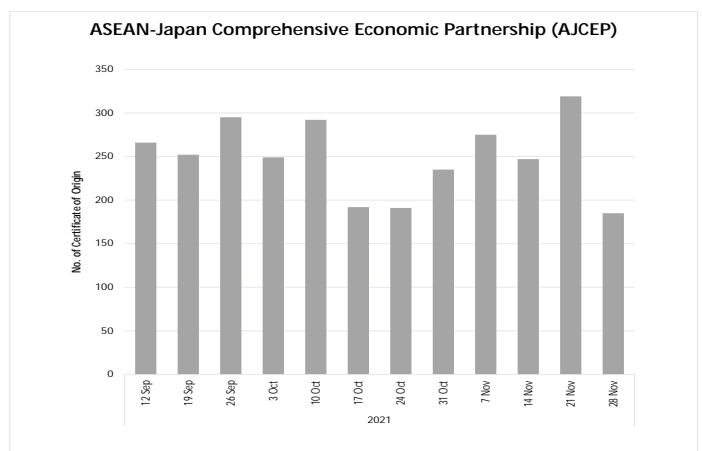
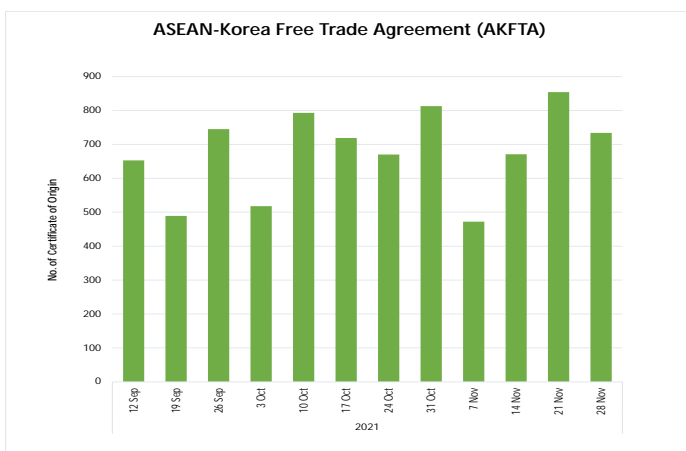
## Annually



Note: \*Provisional Data  
Source: Ministry of International Trade and Industry, Malaysia

# Regional FTA

## Number of Preferential Certificates of Origin (PCOs) as at 28 November 2021



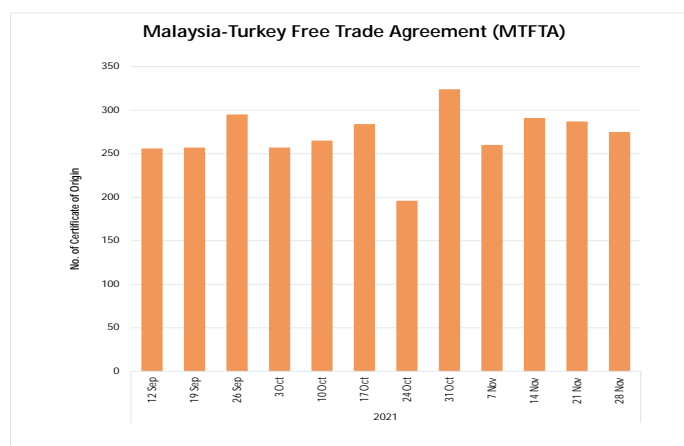
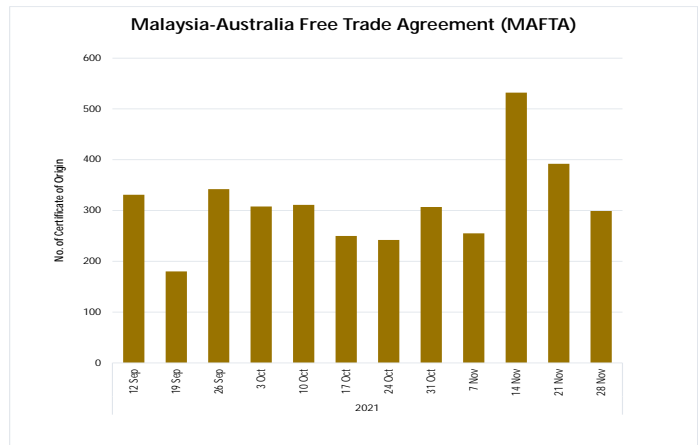
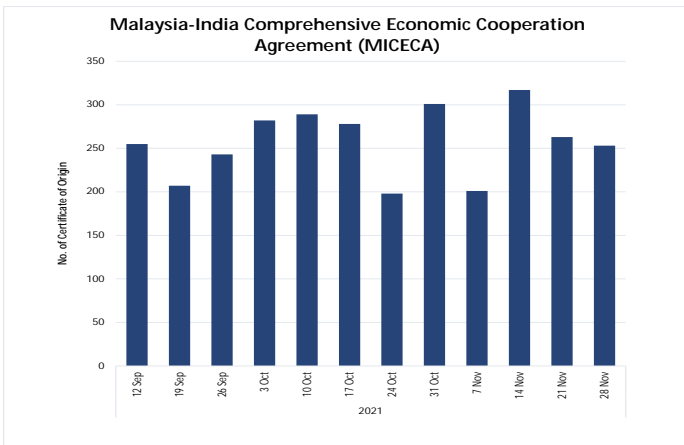
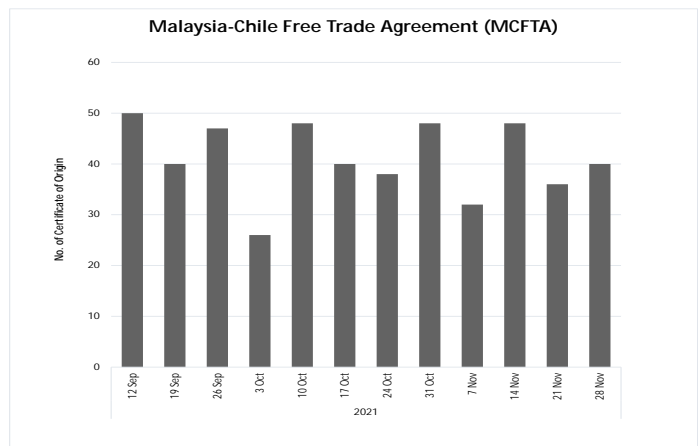
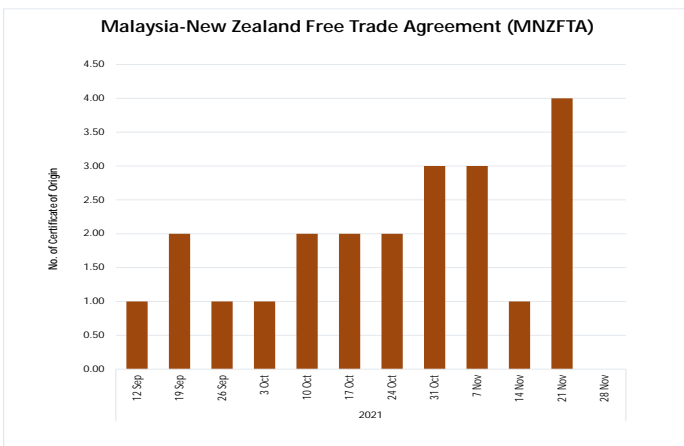
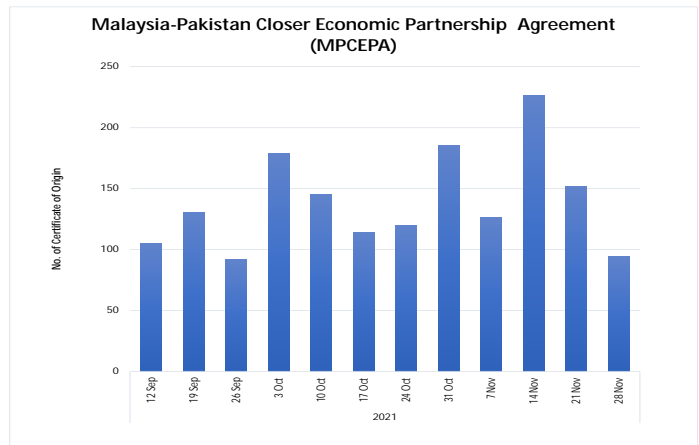
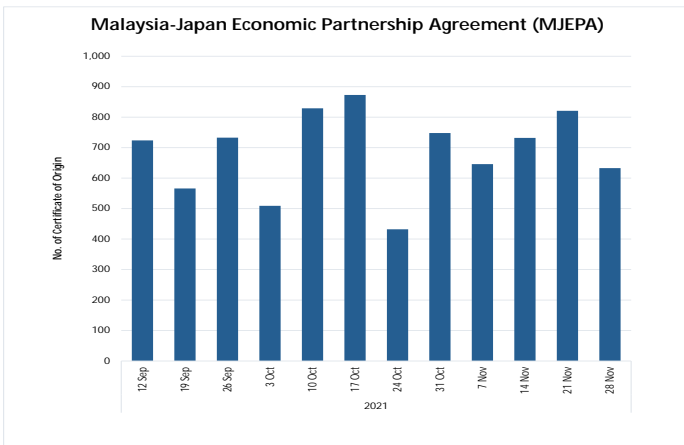
Note: The preference giving countries under the GSP scheme are Liechtenstein, the Russian Federation, Japan, Switzerland, Belarus, Kazakhstan, Norway and Cambodia

Note: \*Provisional Data

Source: Ministry of International Trade and Industry, Malaysia

# Bilateral FTA

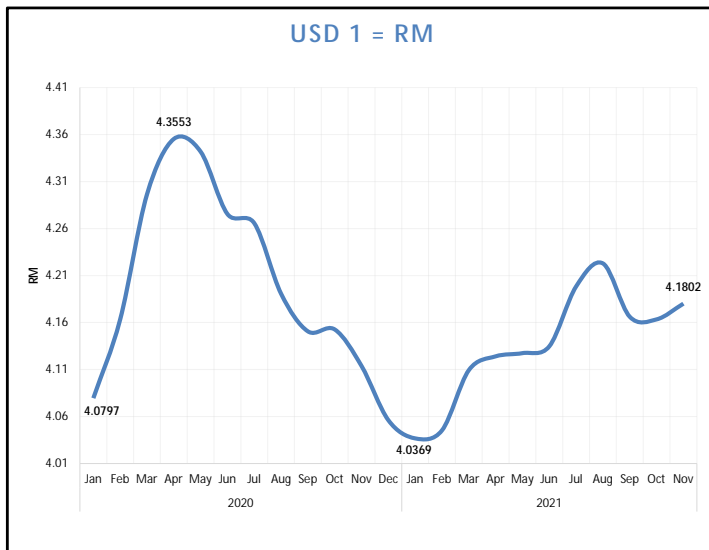
## Number of Preferential Certificates of Origin (PCOs) as at 28 November 2021



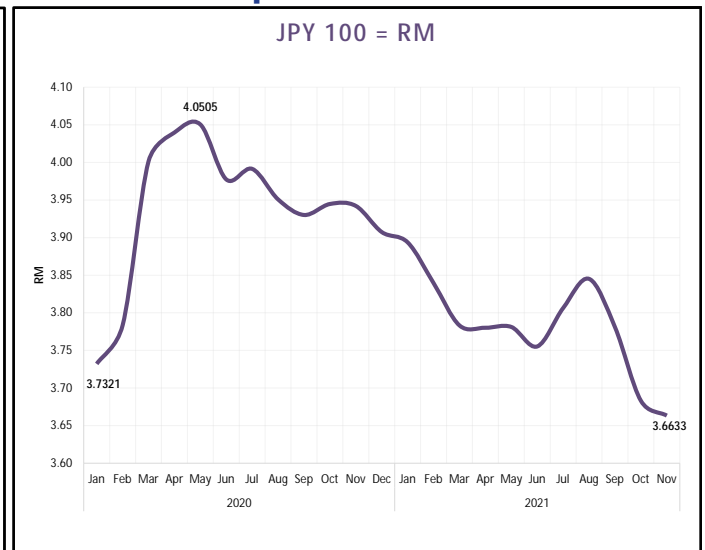
Note: \*Provisional Data  
Source: Ministry of International Trade and Industry, Malaysia

# Malaysian Ringgit Exchange Rate with Selected Countries, January 2020 - November 2021

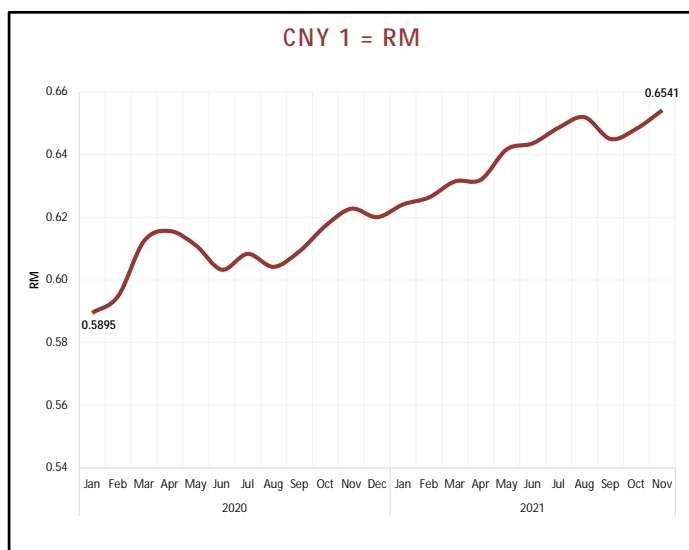
## US Dollar



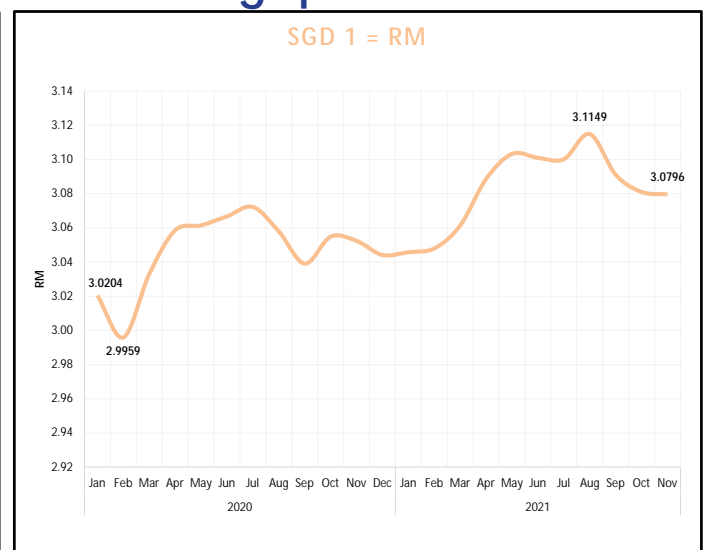
## Japanese Yen



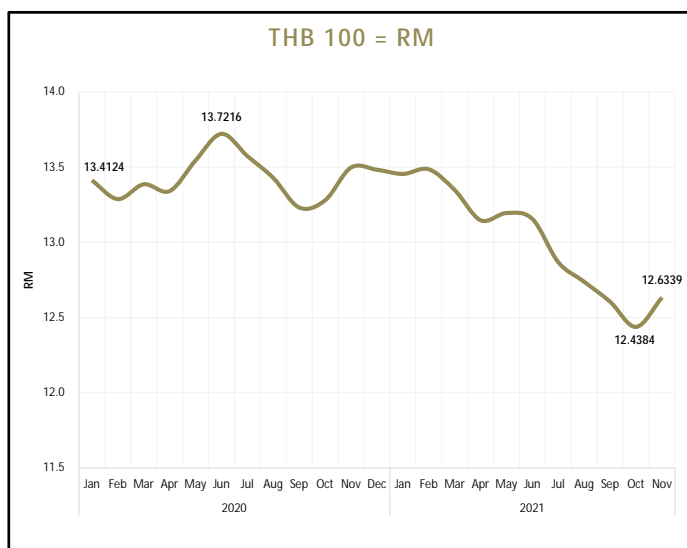
## Chinese Yuan



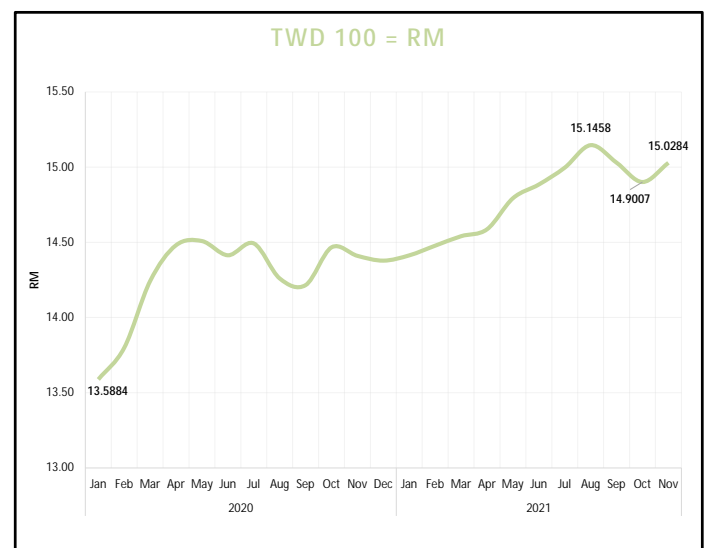
## Singapore Dollar



## Thai Baht



## New Taiwan Dollar



Source : Bank Negara Malaysia

# Commodity Prices

## CRUDE PETROLEUM (BRENT) -per bbl-



▼ **3.9%\***  
**US\$69.9**  
**3 Dec 2021**

**Highest**  
 2020/2021

**22 Oct 2021 : US\$85.5**  
**03 Jan 2020 : US\$68.6**

**15 Jan 2021 : US\$55.1**  
**24 Apr 2020 : US\$21.4**

**Lowest**  
 2020/2021

**Average Price 2020<sup>i</sup> : US\$43.5**

## CRUDE PALM OIL -per MT-



▼ **2.4%\***  
**US\$1,221.1**  
**3 Dec 2021**

**Highest**  
 2020/2021

**29 Oct 2021 : US\$1,302.0**  
**24 Dec 2020 : US\$944.2**

**18 Jun 2021 : US\$844.6**  
**8 May 2020 : US\$473.0**

**Lowest**  
 2020/2021

**Average Price 2020<sup>i</sup> : US\$668.3**

## RUBBER SMR 20 -per MT-



▼ **2.5%\***  
**US\$1,749.5**  
**3 Dec 2021**

## COCOA SMC 2 -per MT-



▼ **4.6%\***  
**US\$1,371.6**  
**3 Dec 2021**

## SUGAR -per lbs-

▼ **3.1%\***  
**US\$18.8**  
**3 Dec 2021**



**Average Price 2020<sup>i</sup> : US\$1,333.4**

**Average Price 2020<sup>i</sup> : US\$1,576.6**

**Average Price 2020<sup>i</sup> : US\$12.9**

## COAL -per MT-



▼ **17.9%\***  
**US\$121.5**  
**3 Dec 2021**

**Average Price 2020<sup>i</sup> : US\$47.7**

## SCRAP IRON HMS -per MT-

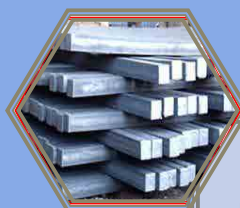


⊖ **%\***      ⊖ **%\***  
**US\$508.0**      **US\$490.0**  
 (high)      (low)  
**3 Dec 2021**

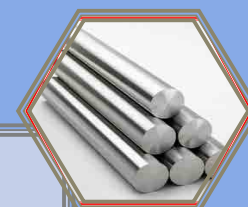
**Average Price 2020<sup>i</sup> : US\$307.9 (high)**  
**Average Price 2020<sup>i</sup> : US\$284.7 (low)**

## Domestic Prices

**3 Dec 2021**



**Billets**  
 (per MT)  
**RM2,700- RM2,800**

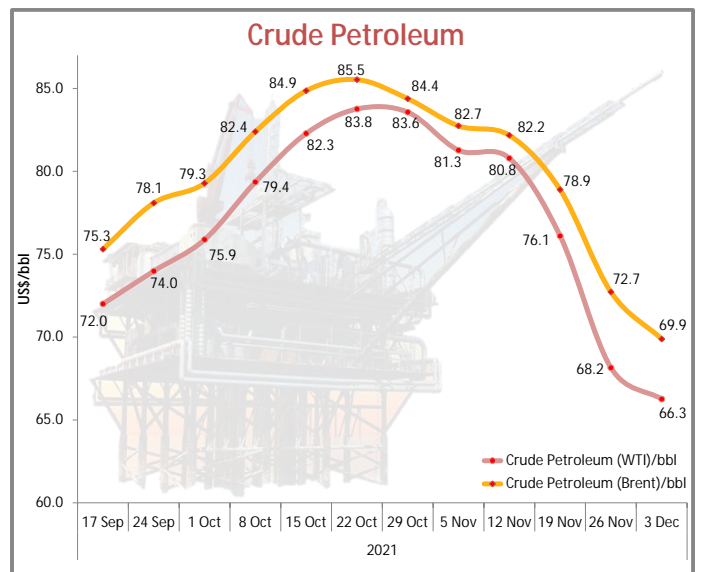
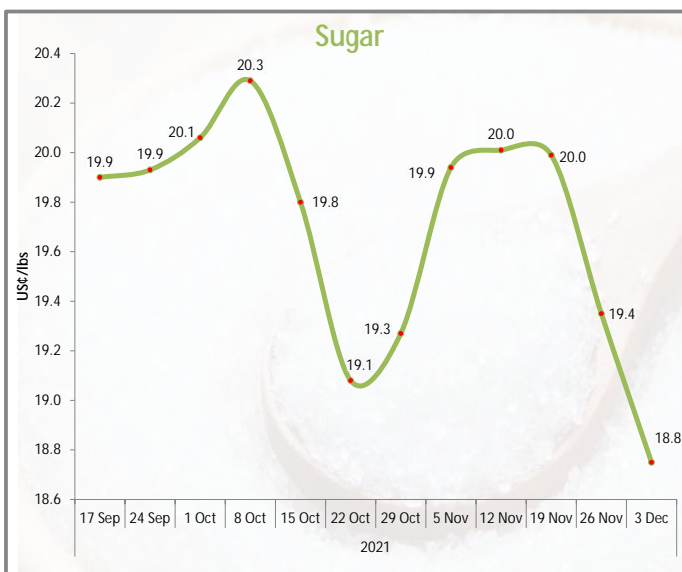
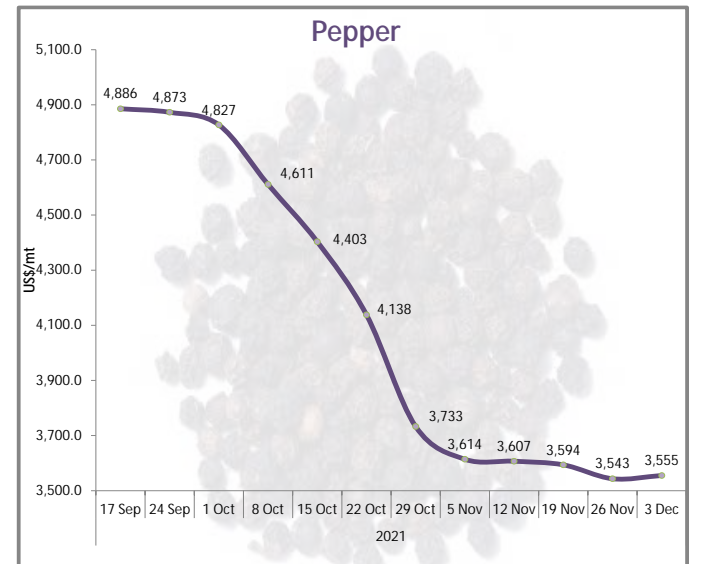
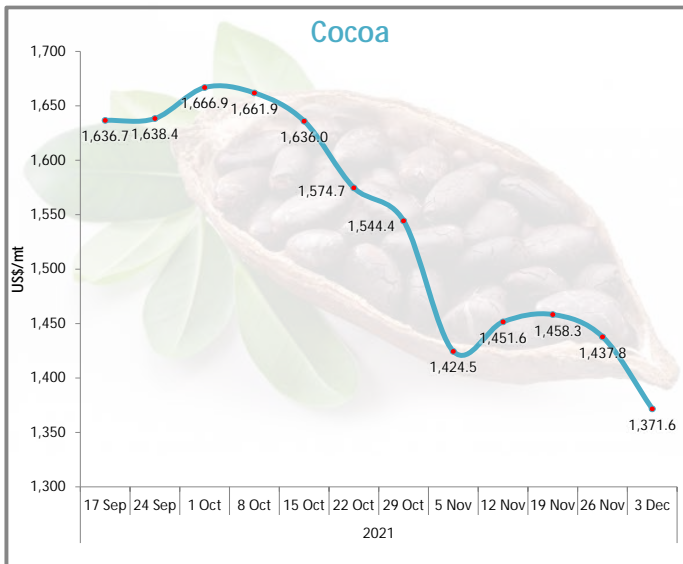
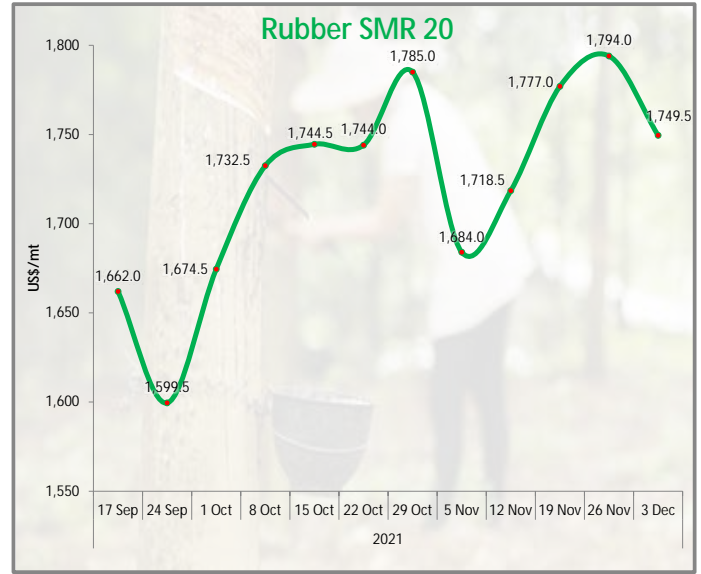
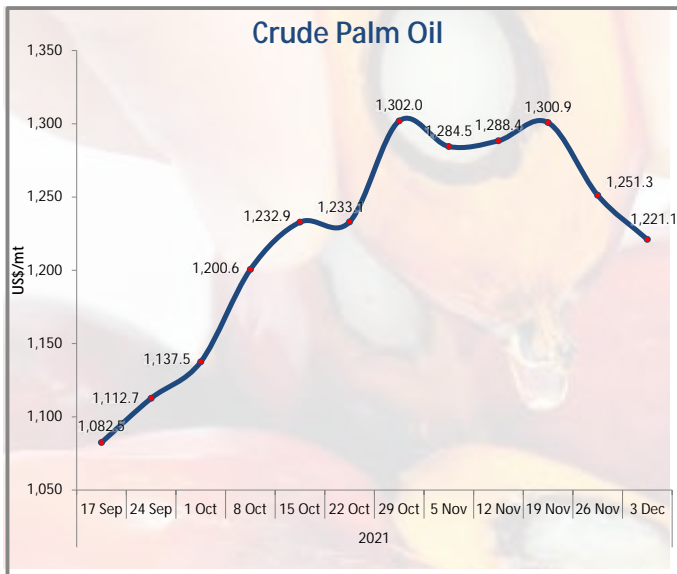


**Steel Bars**  
 (per MT)  
**RM3,100 - RM3,250**

Notes: All figures have been rounded to the nearest decimal point  
 \* Refer to % change from the previous week's price  
 i Average price in the year except otherwise indicated

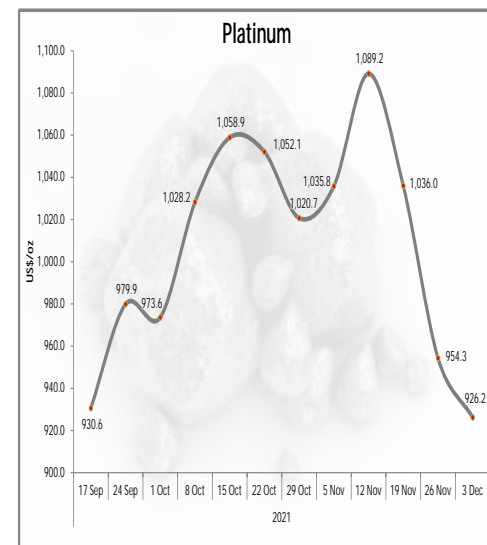
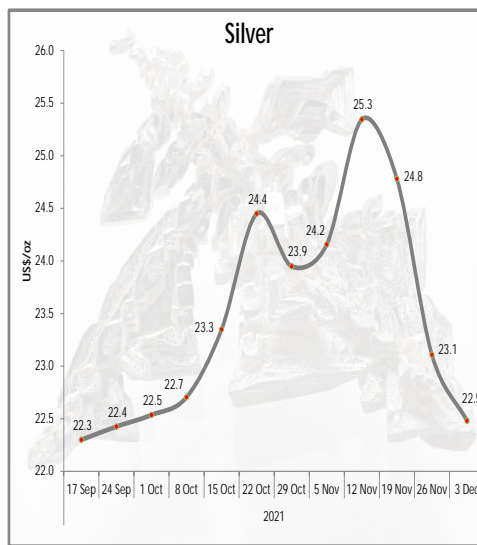
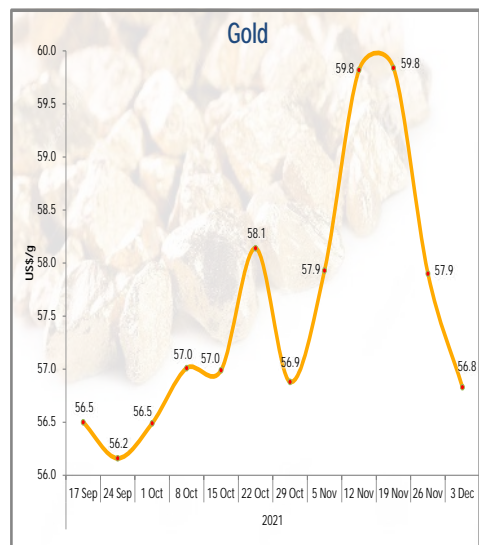
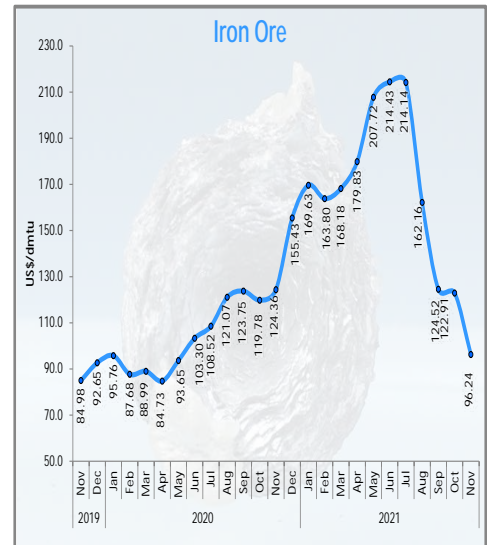
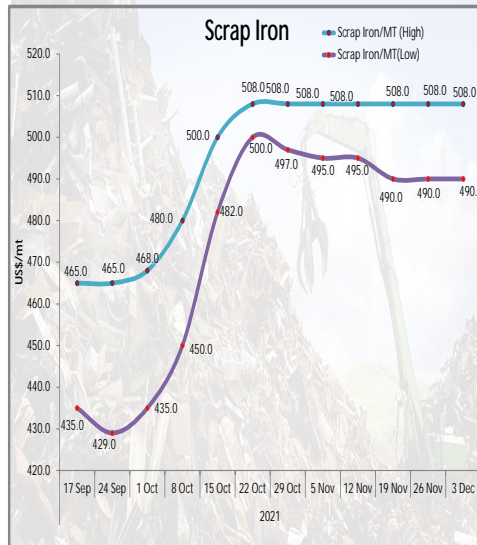
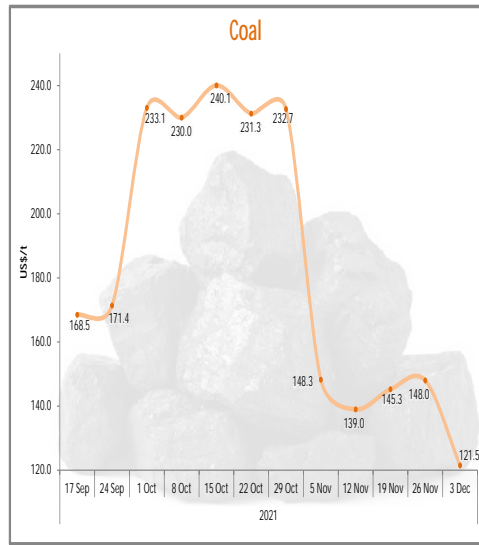
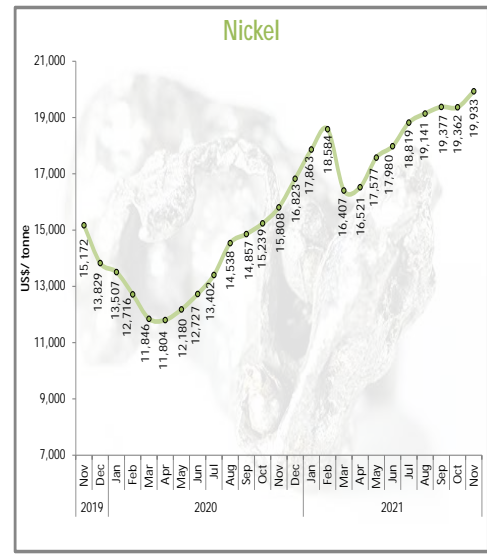
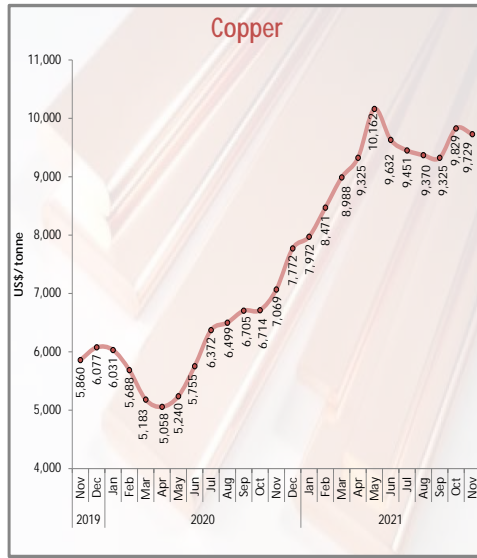
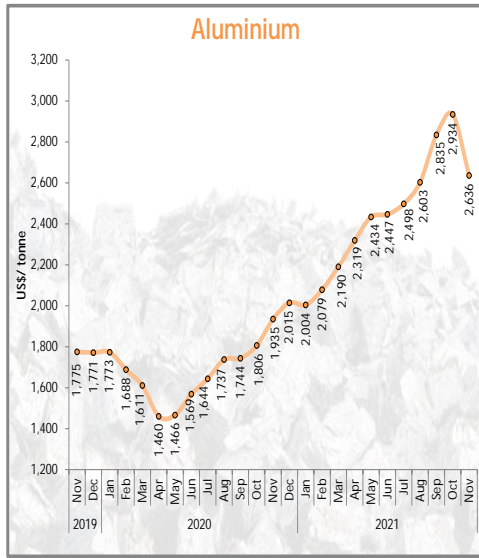
Sources: Ministry of International Trade and Industry Malaysia, Malaysian Palm Oil Board, Malaysian Rubber Board, Malaysian Cocoa Board, Malaysian Iron and Steel Industry Federation, and Bloomberg.

# Commodity Price Trends



Sources: Ministry of International Trade and Industry Malaysia, Malaysian Palm Oil Board, Malaysian Rubber Board, Malaysian Cocoa Board, Malaysian Pepper Board, Bloomberg and Czarnikow Group, World Bank, World Gold Council, The Wall Street Journal.

# Commodity Price Trends



Sources: Ministry of International Trade and Industry Malaysia, Malaysian Iron and Steel Industry Federation, Bloomberg and Czarikow Group, World Bank, World Gold Council, The Wall Street Journal.





# INDUSTRY4WRD RELATED INCENTIVES

Having the extra capital allows SMEs to flourish and prosper. Find the suitable fund for your company.

## 01 | LOANS

### Soft Loan Scheme for Automation and Modernisation (SLSAM)

- targets manufacturing sectors
- 4.0% interest rate per annum for SMEs
- [www.midf.com.my](http://www.midf.com.my)

### Industry Digitalisation Transformation Fund (IDTF)

- targeted sectors: AI, Robotics, Automation etc.
- provides a 2% interest rate subsidy
- [www.bpmb.com.my](http://www.bpmb.com.my)

*Coming Soon!*

1. Intervention Fund\*
  - 70:30 matching grant up to RM500,000.
2. Industry4WRD DISF\*
  - 60:40 matching grant

\*participation in Industry4WRD RA is a prerequisite to apply

### Domestic Investment Strategic Fund (DISF)

- 50:50 matching grant to companies adopting Industry 4.0 enabling technologies
- targets manufacturing and services sectors
- [www.mida.gov.my](http://www.mida.gov.my)

## 02 | GRANTS

### Digital Transformation Acceleration Program (DTAP) Pilot Grant

- 1:1 matching grant
- targets large corporate and mid-tier companies in Malaysia
- assists companies to tap on the expertise of Digital Transformation Labs (DTL)
- [www.mdec.my](http://www.mdec.my)

### Automation Capital Allowance (Automation CA)



For Labour Intensive Industries:

- Automation CA of 200% on the first RM4 million expenditure incurred within 5 years

For other industries:

- Automation CA of 200% on the first RM2 million expenditure incurred within 5 years
- [www.mida.gov.my](http://www.mida.gov.my)

For more information, kindly click the following links:

[https://www.miti.gov.my/index.php/pages/view/industry4WRD?mid=559#tab\\_547\\_2202](https://www.miti.gov.my/index.php/pages/view/industry4WRD?mid=559#tab_547_2202)



MINISTRY OF INTERNATIONAL TRADE AND INDUSTRY

# INDUSTRY4WRD READINESS ASSESSMENT

Get your firm assessed. Be ready for Industry 4.0.

## All you need to know about Industry4WRD RA



### What is it?

Trained assessors will help you to understand your readiness for Industry 4.0 and make recommendations on where to start your transformation.

Who is eligible? Manufacturing and its related services sector



- Incorporated under the Companies Act (1965/2016)/ Registration of Business Act (1956)
- Hold a valid license
- In operation for more than 3 years

### What are the benefits?



To identify areas of improvement in terms of people, process and technology.



Receive comprehensive readiness report.



Be entitled to apply for financial incentives.



## Process Flow

A FEW SIMPLE STEPS

### Incentives for RA

- 500 SMEs will be selected for free assessment.
- Others will get tax exemption on RA fees up to RM27k.



### Enquiries

- General: [i4.0@miti.gov.my](mailto:i4.0@miti.gov.my)
- RA: [industry4wrd@mipi.gov.my](mailto:industry4wrd@mipi.gov.my)



Readiness Assessment



Apply online at [www.miti.gov.my/industry4wrd](http://www.miti.gov.my/industry4wrd)



Evaluation by Committees



Onsite Assessment



Receive RA Report

Business Intervention



Develop Intervention Proposal



Apply for Financial Incentives



Implement the Intervention Plan

For more information, kindly click the following links:

<https://www.miti.gov.my/index.php/pages/view/industry4WRD>

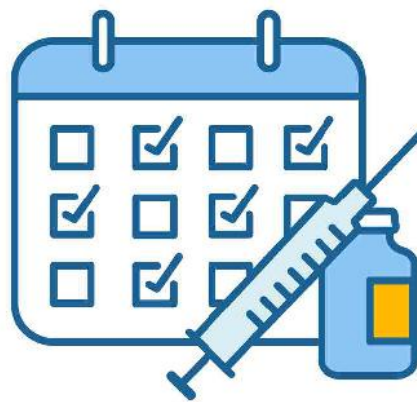
# PIKAS

(PROGRAM IMMUNISASI KERJASAMA AWAM DAN SWASTA)

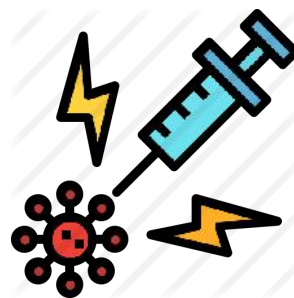
## 1. PIKAS MEDIA RELEASE

## 2. TERMS AND CONDITIONS

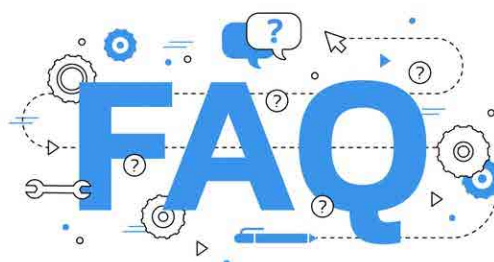
## 3. REGISTRATION



## 4. LIST OF PIKAS PPV



## 5. FAQ



# PIKAS

(PROGRAM IMMUNISASI KERJASAMA AWAM DAN SWASTA)

ALL YOU NEED TO KNOW

## UNDERSTANDING MODEL 1 & MODEL 2 OF PIKAS

ELEMENT	MODEL 1 (Common Use PPV)	MODEL 2 (On-site PPV)
PPV venue: 	Companies send their employees for vaccination at the nearest PPV to the company's location.	Companies set up PPV at their own facility. Companies are allowed to identify suitable facilities for the PPV. The COVID-19 Immunisation Task Force (CITF, MOSTI) will arrange for the site to be inspected and to advise the company accordingly.
Cost borne by company: 	Vaccines are free. Companies are required to bear in full the administration costs for its workers.	Vaccines are free. Companies must formulate the agreement with PIKAS PPV venue operator and to submit the signed agreement to the venue operator prior to the first vaccination date.
PPV payment: 	The payment to PPV is governed by the contract entered into between the participating company and the PPV operator.	Full payment to the PIKAS PPV venue operator has to be made at least five working days before the vaccination date.
Number of Employees: 	As per the registered numbers of employees.	A company, or collectively with other companies, will need to have at least 1,000 workers.

22 June 2021

## PROGRAM IMUNISASI INDUSTRI COVID-19 KERJASAMA AWAM-SWASTA (PIKAS)

MINISTRY OF INTERNATIONAL TRADE AND INDUSTRY

### PIKAS Vaccination Cost (per dose per worker)

No.	Item	PPV	On-site
①	Vaccine	Free	Free
②	Vaccine administration cost to ProtectHealth	RM15.00	RM15.00
③	PPV venue host	RM30.00	Depends on the on-site venue preparation cost which will differ based on the size, layout and other costs to set up the venue.
Total (per dose per worker)		RM45.00	RM15 + PPV preparation cost

Note: The estimated cost is not inclusive of tax.

16 June 2021

# VTL-LAND

## (VACCINATED TRAVEL LANE)



### REQUIREMENTS FOR MALAYSIA-SINGAPORE VTL-LAND TRAVELLERS

TO ENTER  
MALAYSIA

TO ENTER  
SINGAPORE

 <p>Digital Vaccination Certificate Download MySejahtera app or Singapore Trace Together app</p>  		
 <p>Vaccinated Travel Pass (VTP) via url <a href="https://go.gov.sg/vtl-portal">https://go.gov.sg/vtl-portal</a> (only for long-term pass holder travelling from Malaysia to Singapore)</p>		
 <p>Register at <a href="http://www.mysafetravel.gov.my">www.mysafetravel.gov.my</a> (Singapore to Malaysia)</p>		
 <p>Print Vaccination Certificate with QR code</p> <p>Print Vaccinated Travel Pass (VTP) (only for long-term pass holder travelling from Malaysia to Singapore)</p>	  	  
 <p>Purchase bus ticket(s) on <a href="http://www.causewaylink.com.my">www.causewaylink.com.my</a> <a href="http://www.transtar.travel">www.transtar.travel</a></p>		
 <p>Take professionally administered ART/PCR Test 2 days before departure</p> <p>On-arrival RTK Test at Larkin Sentral Bus Terminal</p>	  	  
 <p>Submit SG Arrival Card (SGAC) under Foreign Visitors</p> <p>Electronic Health Declaration Card (eHDC) via MySejahtera</p>	  	  

Note : Travellers are advised to have adequate travel / medical insurance coverage for COVID-19 related medical treatment and hospitalisation costs, if required.

25 November 2021

 [www.miti.gov.my](http://www.miti.gov.my)

    MITIMalaysia

 MITIMalaysiayoutube

# VTL-LAND

## (VACCINATED TRAVEL LANE)



### VTL-LAND TRAVELLER'S JOURNEY



1

#### Pre-Departure

Prepare these softcopies:

- 1) Digital vaccination certificate
- 2) Vaccinated Travel Pass  
(only for long-term pass holder travelling from Malaysia to Singapore)

Download MySejahtera app or Singapore Trace Together app



2

Register at [www.mysafetravel.gov.my](http://www.mysafetravel.gov.my) (Singapore to Malaysia) or <https://go.gov.sg/vtl-portal> (Malaysia to Singapore)



3

Print Vaccination Certificate with QR code, Vaccinated Travel Pass (for long-term pass holder travelling from Malaysia to Singapore), Travel/Medical insurance is required too



4

Purchase bus ticket(s) via [www.causewaylink.com.my](http://www.causewaylink.com.my) or [www.transtar.travel](http://www.transtar.travel)



5

Take RTK or ART / PCR Test 48 hours before departure

ALL YOU NEED TO KNOW

# VTL-LAND

## (VACCINATED TRAVEL LANE)



### VTL-LAND TRAVELLER'S JOURNEY



6

On departure day arrive at least 1 hour earlier at boarding points



7

**At Departure Points**



Ensure these documents are in-hand:

- Proof of VTL-Land Registration for travellers entering Malaysia
- Proof of Vaccinated Travel Pass (only for long-term pass holder travelling from Malaysia to Singapore)
- RTK or ART / PCR Test results
- Vaccination Certificate
- Passport
- Travel/Medical Insurance
- Bus Ticket



8



• For Malaysians, please submit the SG Arrival Card (SGAC) under Foreign Visitors

• For Singapore Citizens, please submit electronic Health Declaration Card (eHDC) under Singapore Citizens, Permanent Residents & Long-Term Pass Holders, and upload your vaccination certificate QR code during the submission if you were vaccinated overseas



9

**Upon-Arrival**



• For travellers arriving at the Larkin Sentral Bus Terminal, proceed to do the On-Arrival Test

• Present all documentations at the immigration for clearance



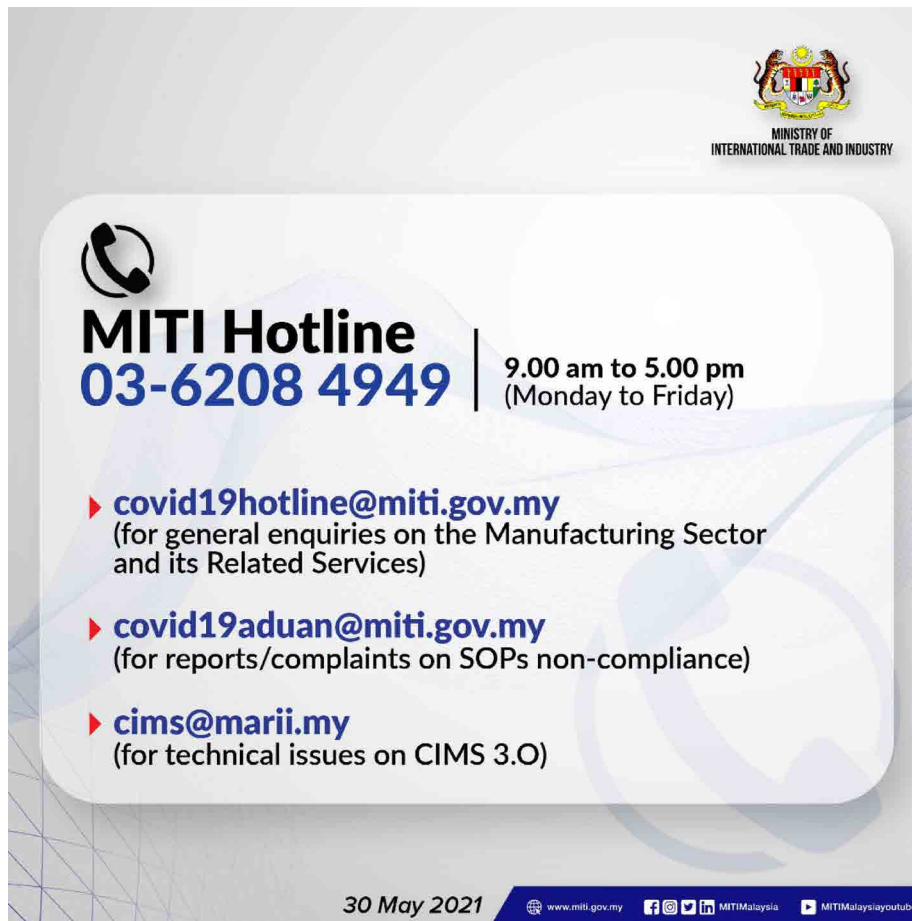
10


**Post-Arrival**




Check traveller's status on MySejahtera app or Singapore Trace Together app



ALL YOU NEED TO KNOW



  
MINISTRY OF  
INTERNATIONAL TRADE AND INDUSTRY

  
**MITI Hotline**  
**03-6208 4949** | 9.00 am to 5.00 pm  
(Monday to Friday)

- ▶ [covid19hotline@miti.gov.my](mailto:covid19hotline@miti.gov.my)  
(for general enquiries on the Manufacturing Sector and its Related Services)
- ▶ [covid19aduan@miti.gov.my](mailto:covid19aduan@miti.gov.my)  
(for reports/complaints on SOPs non-compliance)
- ▶ [cims@marii.my](mailto:cims@marii.my)  
(for technical issues on CIMS 3.0)

30 May 2021 [www.miti.gov.my](http://www.miti.gov.my)  MITIMalaysia  MITIMalaysiayoutube

Bagi sebarang pertanyaan/aduan berkaitan operasi sektor ekonomi, sila hubungi talian hotline MITI seperti di atas.



**MITI POCKET TALK**  
A SERIES OF SESSION FOR THE PRIVATE SECTOR

**When?** Once a month | **Where?** MITI Tower Kuala Lumpur or MITI Regional Offices

Information on the benefits of **Free Trade Agreements (FTAs)** and current updates

Introduction on **Preferential Certificates of Origin (PCO)** application procedures

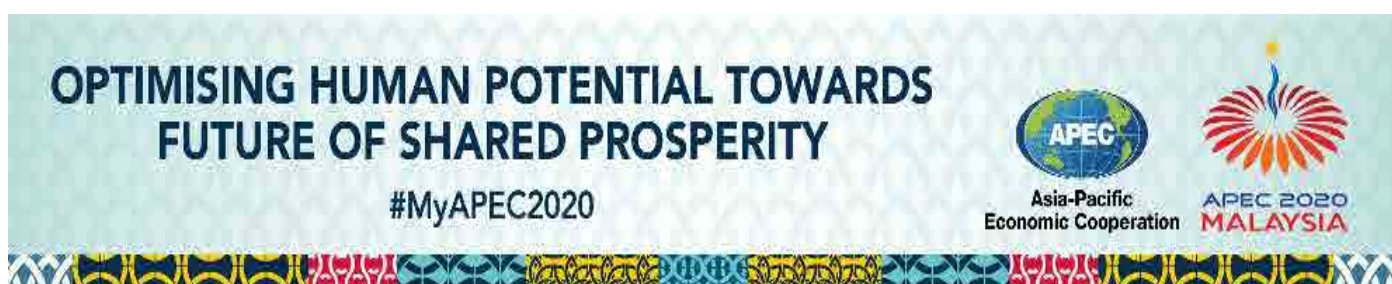
For more information, please contact :



03-6200 0468 / 69 / 57





[allaki@miti.gov.my](mailto:allaki@miti.gov.my)



**OPTIMISING HUMAN POTENTIAL TOWARDS  
FUTURE OF SHARED PROSPERITY**

#MyAPEC2020

 **Asia-Pacific  
Economic Cooperation**  **APEC 2020  
MALAYSIA**

For more information, kindly click the following links:

<https://www.myapec2020.my/en/>



# IMPLEMENTATION OF ELECTRONIC SIGNATURE AND SEAL THROUGH THE EPCO SYSTEM



EFFECTIVE FROM 13 APRIL 2020

For more information, kindly click the following links:

<https://bit.ly/2RUyG8l>

## HOW COMPANY CAN CHECK THE STATUS OF ATIGA E-FORM D TRANSACTIONS IN THE ELECTRONIC PREFERENTIAL CERTIFICATE OF ORIGIN (EPCO) SYSTEM



For more information, kindly click the following links: <https://bit.ly/2ZhxmRp>

**Be part of the MITI community.  
Let's Build Back Better together.**  
**#BersamaMenjanaEkonomi**



[www.miti.gov.my](http://www.miti.gov.my)

 MITI Malaysia

## MITI Weekly Bulletin (MWB) Mobile Apps



MITI MWB APPs is now available for IOS, Android and Windows platforms.

MWB APPs can be downloaded from **Gallery of Malaysian Government Mobile APPs (GAMMA)** at the link: <http://gamma.malaysia.gov.my/#/appDetails/85>



Dear Readers,

Kindly click the link below for any comments in this issue. MWB reserves the right to edit and republish letters as reprints.

<http://www.miti.gov.my/index.php/forms/form/13>